

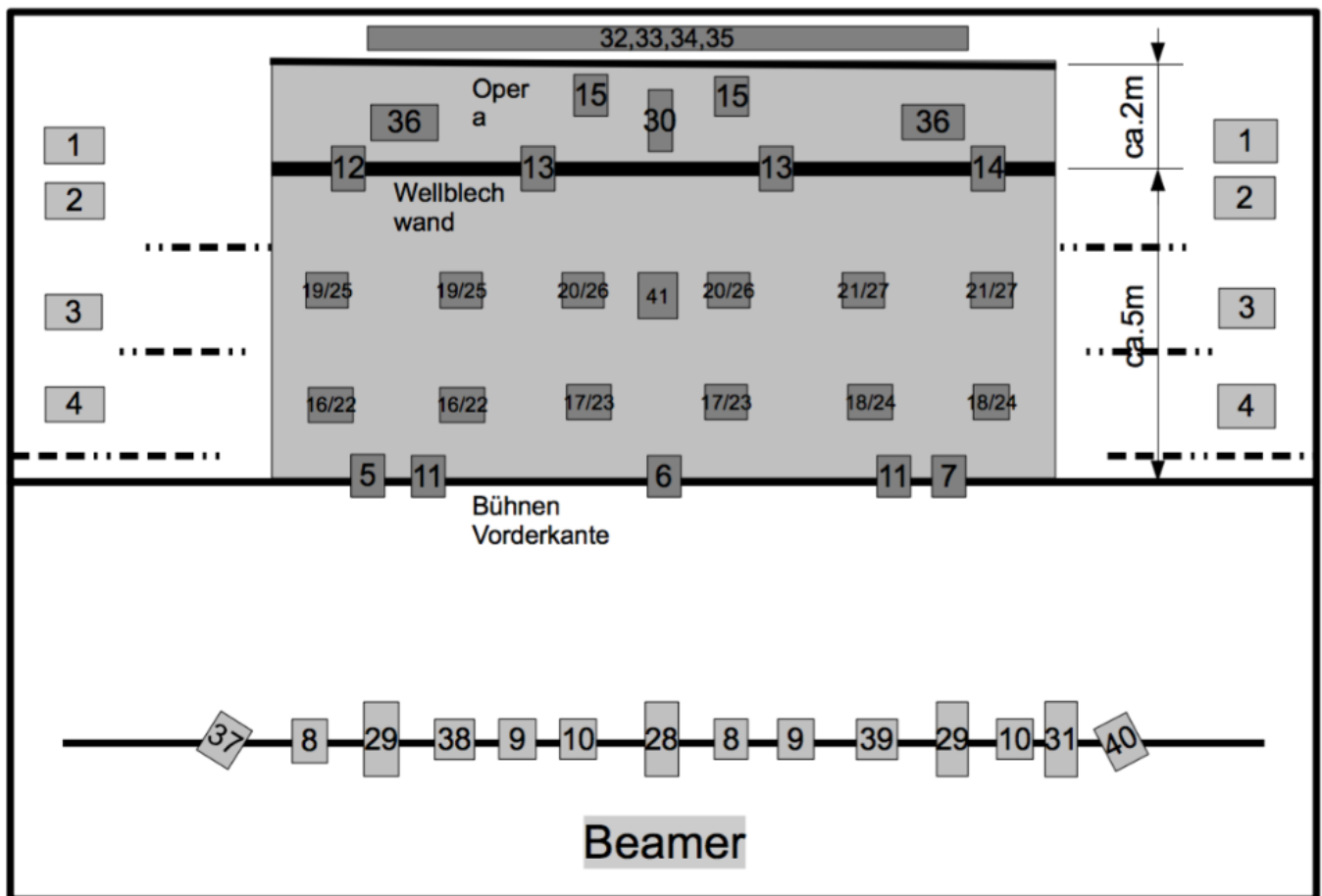
„Unterwegs - En el camino“ (On the way)
Theater Pfütze, Teatro el Galpón

Artists:	3 Women, 3 Men
Technicians:	2 technicians
Audience restriction:	350 Spectators (if changes are needed please contact our technical director)
Duration of the play:	ca. 75 min without break
Load-in and set-up:	2 hours stage construction, then 6 to 8 hours of light-, sound-, and videoinstallation. Afterwards 2 hours of tech rehearsal
Crew:	crew minimum a. 2 stagehands for load-in/out b. 2 light operators c. 1 sound and video operator Note: the local crew mentioned in b. and c. must be the same people for the tech rehearsal and show. If any substitutions or replacements are needed, please inform our technical director as soon as possible.
Breakdown:	2 hours (2 local stagehands are needed)
Stage requirements:	On-stage area: depth 8m, width 10m, clearance height 5m On both stagesides we need at least 3 side wings with legs, for the entrances of the actors and the side lighting On the stage back we need a white opera foil (width 8m, height 5m), distance to stage edge ca. 7m We require 2 rigging points where we can mount a mechanism to drop ca. 30 pairs of shoes from above the stage. The stage construction is explained in the pages below.
Light:	Please note focus and channel list attached. All material (lamps, filters) must be provided by the venue
Sound:	We have a live musician on stage playing the guitar, his DI signal must be connected to the housemixdown and played via the PA. His position is front, stage left (audience right)
Video:	There are videofiles to be projected on the opera at the rear stage. A Macbook Pro with HDMI out can be provided by us. We need a capable videobeamer (at least 4000 Ansilumen), image size: width 8m x height 3m
Special requirements:	It has to be possible to operate light, video and sound from one spot with good view to the stage
Props:	All props will be provided by us. We need 2 proptables on each off-stage side

Channel List „Unterwegs“

CH	Lee	Lamp	Focus	Position	Dimmer	Dimmer
1	201	ETC 25-50	Gasse hinter Wand	Höhe ca. 2,5m		
2	201	ETC 25-50	Gasse vor Wand	Höhe ca. 2,5m		
3	201	ETC 25-50	Gasse Mitte	Höhe ca. 2,5m		
4	201	ETC 25-50	Gasse Vorne	Höhe ca. 2,5m		
5	nc	PC	Front mit Wand li	Portalbrücke		
6	nc	PC	Front mit Wand mi	Portalbrücke		
7	nc	PC	Front mit Wand re	Portalbrücke		
8	nc	2x PC	Front bis Wand li	Z - Brücke		
9	nc	2x PC	Front bis Wand mi	Z - Brücke		
10	nc	2x PC	Front bis Wand re	Z - Brücke		
11	nc	2x PC	Front Tor	Portalbrücke		
12	200	PC	Contra Fläche li	Bühne hinten		
13	200	2x PC	Contra Fläche mi	Bühne hinten		
14	200	PC	Contra Fläche re	Bühne hinten		
15	200	2x PC	Contra Tor	Bühne hinten		
16	179	ETC Par	Head Bühne warm vorn vorne li	Bühne		
17	179	ETC Par	Head Bühne warm vorn vorne mi	Bühne		
18	179	ETC Par	Head Bühne warm vorn vorne re	Bühne		
19	179	ETC Par	Head Bühne warm vorn hinten li	Bühne		
20	179	ETC Par	Head Bühne warm vorn hinten mi	Bühne		
21	179	ETC Par	Head Bühne warm vorn hinten re	Bühne		
22	201	ETC Par	Head Bühne kalt vorn vorne li	Bühne		
23	201	ETC Par	Head Bühne kalt vorn vorne mi	Bühne		
24	201	ETC Par	Head Bühne kalt vorn vorne re	Bühne		
25	201	ETC Par	Head Bühne kalt vorn hinten li	Bühne		
26	201	ETC Par	Head Bühne kalt vorn hinten mi	Bühne		
27	201	ETC Par	Head Bühne kalt vorn hinten re	Bühne		
28	nc	ETC 25-50	Spalt Tor 1m	Portalbrücke		
29	201 /nc	2x ETC 25-50	Tor ganz bis Opera 2m	Portalbrücke		
30	201	ETC 25-50	Head Fensterwand	Bühne hinten		
31	nc	Profil	Dominik	Z - Brücke		
32			LED	Bühne hinten		
33		8x LED Par odgl.	Opera LED Rot	Bühne hinten		
34		"	Opera LED Grün	Bühne hinten		
35		"	Opera LED Blau	Bühne hinten		
36	nc	2x ETC 25-50	Seite Hinten	Bühne hinten		
37	201	PC	Front vorne kalt li	Z - Brücke		
38	201	PC	Front vorne kalt mi/li	Z - Brücke		
39	201	PC	Front vorne kalt mi/re	Z - Brücke		
40	201	PC	Front vorne kalt re	Z - Brücke		
41	201	PC	Front Tor steil	Bühne		
42			Saal	Saal		

Lighting Plan



The scenery

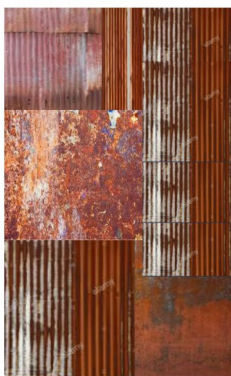
Consists of 1 backwall , 2 sliding gates and a free stage area in front of it
The backwall is 8 meters wide and 4 meters high
It consists in 4 segments (2 meters wide and 4 meters high)



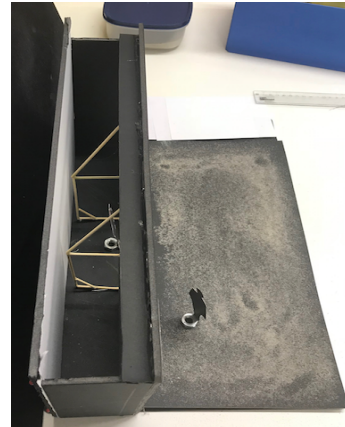
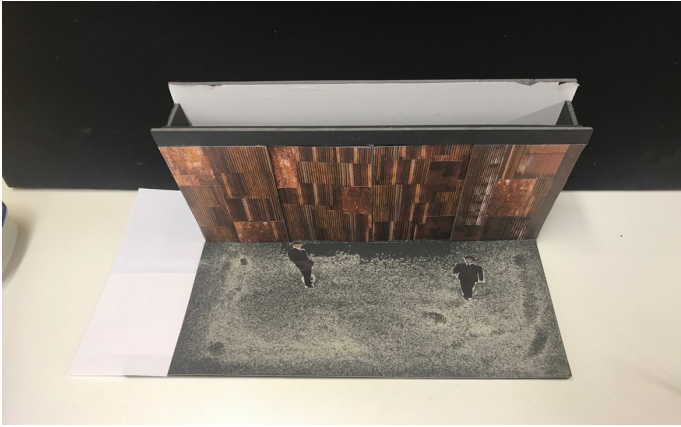
Both of the sliding gates in the middle can be shifted to the sides, they slide behind the 2 static and fixed segments. The sliding gates have guiding rails on the upper side.



The walls are coated with rusty corrugated iron sheets and some flat rusty iron sheets. The orientation is edgewise.



The sliding gates should be manageable from behind the scenery, by cable pull. One technician should be able to open and close the sliding gates with the bowden cable.

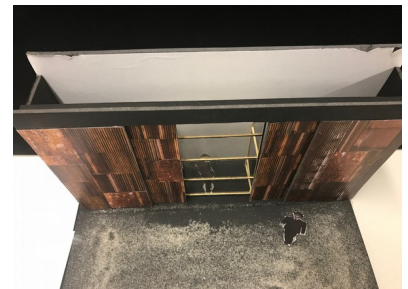
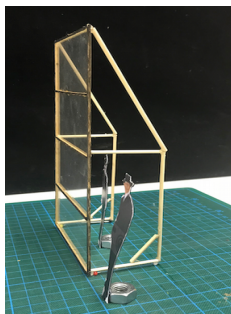
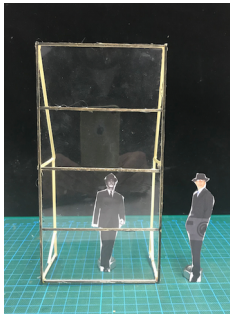


Behind the backwall should approx. be 2 meters distance to the back of the stage. In the back there is a white wall. This can be a white opera, a white projection foil or a white cloth.

There is a wall on a carriage/cart out of Plexiglas/acrylic glass (Polycarbonat 3mm transparent). The wall is 2 meters wide and 4 meters high.

The wall is split in 4 segments (2 meters wide and 1 meter high)

The wall is on wheels so it can be moved behind the scenery, functioning as a „window“ or „glasswall“ between the two sliding gates.



In front of the backwall is a painted floorcloth or ground plates 5 meters deep, 8 meters wide

There is video material projected by a beamer on the ironwall (full 8 meters width) and the white back wall behind the iron wall.

In the rig over the stage there have to be installed 2 mechanisms that allow the dropping of approx. 35 pairs of shoes from above the stage.

NOTE for international/intercontinental bookings:

In case the transport costs of the original scenery and props of "Unterwegs - En el camino" are higher compared to the efforts of a crew of technicians or stage builders reconstructing the whole scenery, we are open to the possibility of charging a local company or workshop with the production of a copy. In that case, the props should be raised and provided by the local promoter.

For details, please contact us.

International contacts, organization:

Elisa Merkens
Mail: merkens@theater-pfuetze.de
Tel.: +4917656839351

Technical Director and contact person on site:

Andreas Wagner
Mail: wagner@theater-pfuetze.de
Tel: +491703236662